



Justrite Safety Group

Dry Areas - Dyna Shield™

# 419 Diamond Sof-Tred™



419 DIAMOND SOF-TRED™

Dry Areas - Medium duty

# 419 Diamond Sof-Tred™

Non-directional "Deck Plate" pattern allows freedom of movement. Exceptional worker comfort due to 12.7 mm thick specially formulated compound. Protective layer of exclusive Dyna-Shield™ extends service life by 50% compared to regular microcellular vinyl\*.

Available with yellow borders along sides comply with OSHA code 1910-144. All 4 sides are bevelled and sealed to minimize tripping hazards.

**Recommended use:**

- Medium duty
- Industrial
- For placement in manufacturing plants, assembly lines, picking, packing and logistics warehouses, individual work stations.

**Specifications:**

- Microcellular vinyl
- Backing: Microcellular PVC foam
- Bevelled edges on all sides
- Overall thickness: 12.7 mm
- Weight: 4 kg/m<sup>2</sup>
- Slip rating: R10
- Special characteristics: Free of DOP, free of DMF, free of ozone depleting substances, free of silicone and free of heavy metals

**Standard sizes:**

- 60cm x 91cm
- 91cm x 150cm

**Full rolls:**

- 60cm x 18.3m
- 91cm x 18.3m
- 122cm x 18.3m

**Custom lengths:**

- 60cm x linm
- 91cm x linm
- 122cm x linm

**Colours:**

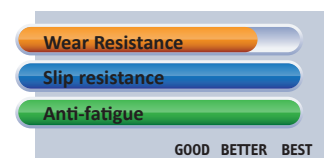
- Black, Black/Yellow, Grey

**Cleaning instructions:**

- Daily sweeping with a brush



**PRODUCT TESTING**





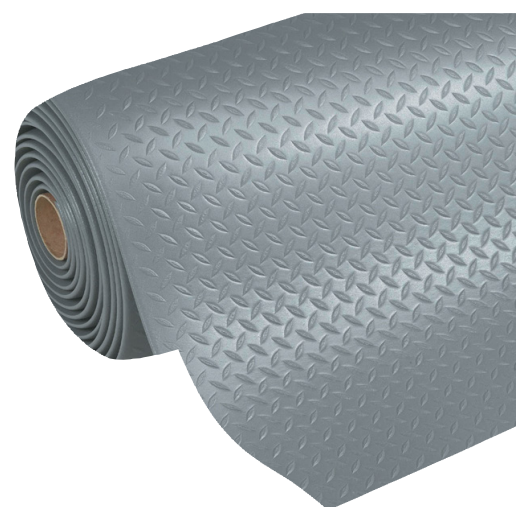
## 419 Diamond Sof-Tred™ (black/yellow)

Art. nr.	Dimensions	Weight kg
419S0023BY	60cm x 91cm	2,1
419S0035BY	91cm x 150cm	5,3
419R0024BY	60cm x 18.3m	43
419R0036BY	91cm x 18.3m	64
419R0048BY	122cm x 18.3m	86
419C0024BY	60cm x linm	2,3
419C0036BY	91cm x linm	3,5
419C0048BY	122cm x linm	4,7



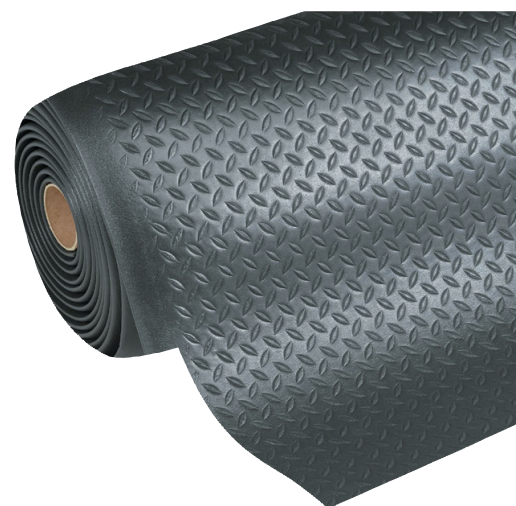
## 419 Diamond Sof-Tred™ (grey)

Art. nr.	Dimensions	Weight kg
419S0023GY	60cm x 91cm	2,1
419S0035GY	91cm x 150cm	5,3
419R0024GY	60cm x 18.3m	43
419R0036GY	91cm x 18.3m	64
419R0048GY	122cm x 18.3m	86
419C0024GY	60cm x linm	2,3
419C0036GY	91cm x linm	3,5
419C0048GY	122cm x linm	4,7



## 419 Diamond Sof-Tred™ (black)

Art. nr.	Dimensions	Weight kg
419S0023BL	60cm x 91cm	2,1
419S0035BL	91cm x 150cm	5,3
419R0024BL	60cm x 18.3m	43
419R0036BL	91cm x 18.3m	64
419R0048BL	122cm x 18.3m	86
419C0024BL	60cm x linm	2,3
419C0036BL	91cm x linm	3,5
419C0048BL	122cm x linm	4,7



# 419 Diamond Sof-Tred™

## GENERAL DESCRIPTION

<b>Designation</b>	Ergonomic, Anti-fatigue Safety Matting
<b>Type</b>	Dry Areas - Dyna Shield™
<b>Description</b>	12.7 mm thick specially formulated compound with non-directional "Deck Plate" pattern. Protective layer of exclusive Dyna-Shield™ extends service life.
<b>Surface</b>	Textured grip pattern
<b>Category</b>	Ergonomic, Anti-fatigue Safety Matting
<b>Recommended use</b>	Dry Areas Medium duty
<b>Colours</b>	Black, Black/Yellow, Grey
<b>Edges</b>	Bevelled edges on all sides

## TECHNICAL SPECIFICATIONS

<b>Material</b>	Microcellular vinyl
<b>Backing</b>	Microcellular PVC foam
<b>Process</b>	Foaming
<b>Total weight</b>	4 kg/m <sup>2</sup>
<b>Overall thickness</b>	12,7 mm

## TESTS

<b>Compression deflection</b>	U.S.	0.67 cm 0.82 cm
<b>Slip rating</b>	DIN 51130	R10
<b>Sustainability</b>	Recyclable material	
<b>Foam battery</b>	ASTM D3574	40 lb/in <sup>2</sup>
<b>Abrasion resistance</b>	ASTM D3884-01	2.20% 0.83%
<b>Coefficient friction</b>	ASTM C1028-96	1.00
<b>Elongation</b>	ASTM D412	147%
<b>Breaking load</b>	ASTM D412	16.8 lb
<b>Tear Strength</b>	ASTM D1004	12.1 lb
<b>Hardness</b>	ASTM D2240-02	20 Shore A
<b>Surface flammability</b>	ASTM D2859	Pass

## DIMENSIONS

Standard sizes	Full rolls	Custom lengths
60cm x 91cm	60cm x 18.3m	60cm x linm
91cm x 150cm	91cm x 18.3m	91cm x linm
	122cm x 18.3m	122cm x linm