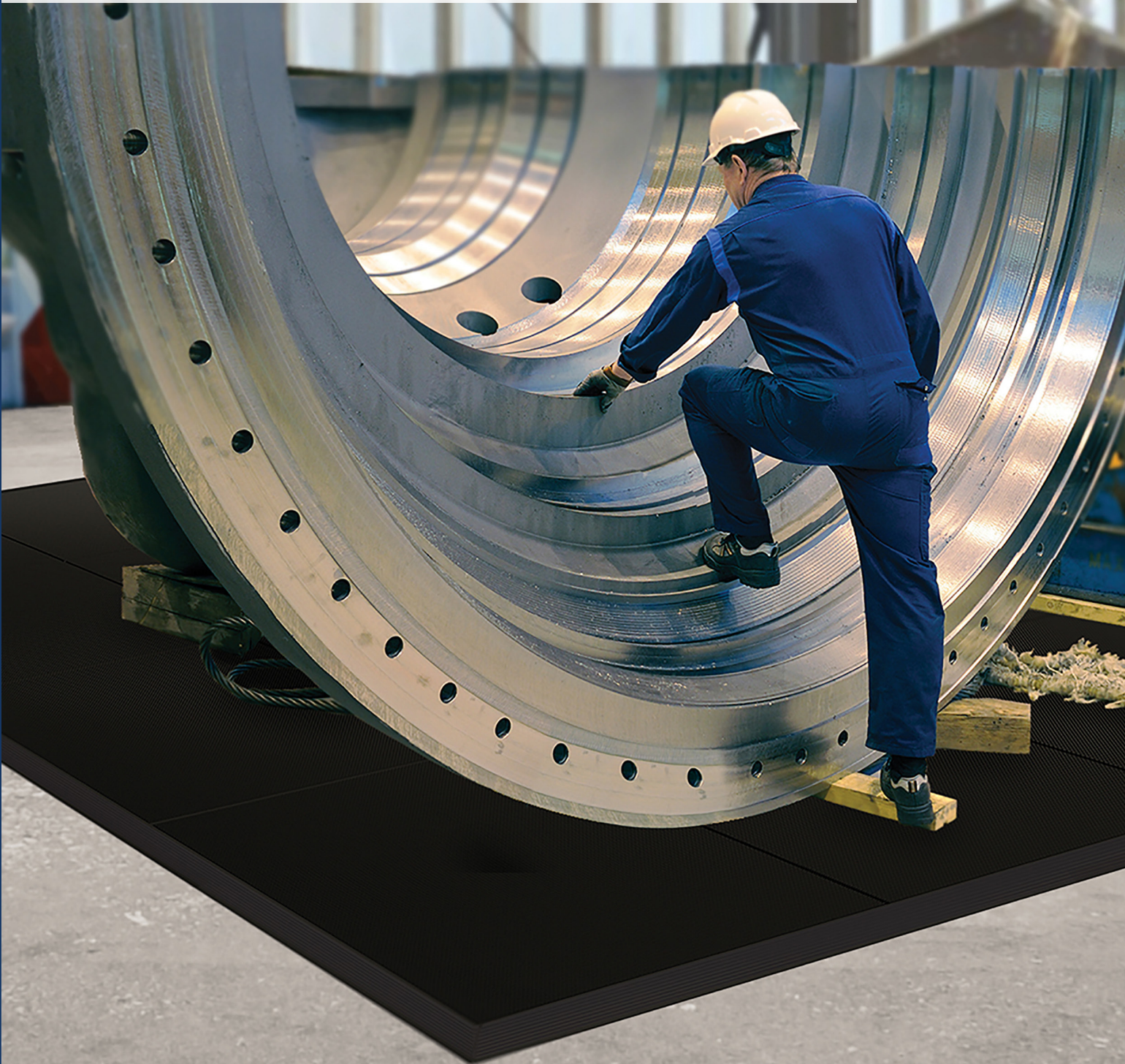




Justrite Safety Group

Industrial Specialties - Shock Absorbing Matting

040 Slabmat Carré™



040 SLABMAT CARRÉ™

Dry Areas - Heavy duty

040 Slabmat Carré™

Durable protection mat which protects both floors and heavy equipment from damage.

The thick platform can withstand heavy weights while the non-slip textured top surface ensures sure footing and freedom of movement.

Made of a tough rubber compound which makes the mat virtually indestructible. Free of DOP, free of DMF, free of ozone depleting substances, free of silicone and free of heavy metals.

High quality 100% natural rubber, it absorbs the shock of fallen materials and protects floors and equipment. These interlocking mats allow on-site customization with units of 91 cm x 91 cm they can be easily laid out from wall to wall or as islands, in any direction or shape. Beveling solutions; allow out and inside corners.

Recommended use:

- Heavy duty
- Industrial Environments
- For placement in manufacturing plants, assembly lines, picking, packing and logistics warehouses, individual work stations.

Specifications:

- Natural rubber
- Attachable bevelled edges are available
- Overall thickness: 13 mm
- Weight: 18 kg/m²
- Special characteristics: Free of DOP, free of DMF, free of ozone depleting substances, free of silicone and free of heavy metals

Recommended accessories:

- 041 Slabmat Carré™ Safety Ramps

Standard sizes:

- 91 cm x 91 cm

Colours:

- Black

Cleaning instructions:

- Hose off with water

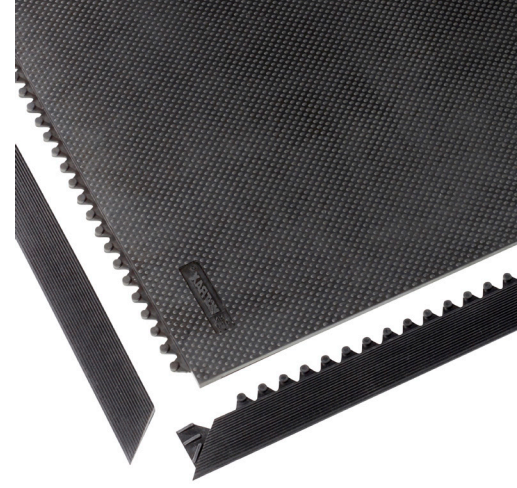


PRODUCT TESTING



040 Slabmat Carré™ (black)

Art. nr.	Dimensions	Weight kg
040S0033BL	91 cm x 91 cm	16



040 Slabmat Carré™

GENERAL DESCRIPTION

Designation	Ergonomic, Anti-fatigue Safety Matting
Type	Industrial Specialties - Shock Absorbing Matting
Description	Modular system with textured top surface which provides traction.
Surface	Textured grip pattern
Category	Ergonomic, Anti-fatigue Safety Matting
Recommended use	Dry Areas Heavy duty
Colours	Black
Edges	Attachable bevelled edges are available

TECHNICAL SPECIFICATIONS

Material	Natural rubber
Process	Compression Moulding
Total weight	18 kg/m ²
Overall thickness	13 mm

TESTS

Compression deflection	U.S.	@ 25% 33.3 lb/in ² @ 50% 33.3 lb/in ²
Sustainability	Recyclable material, 100% recycled PVC top surface	
Abrasion resistance	ASTM D3884-01	5000 cycles 2.90 gr weight loss
Coefficient friction	ASTM C1028-96	0.68
Elongation	ASTM D412	165.7%
Breaking load	ASTM D412	44 lb
Tear Strength	ASTM D1004	55.4 lb
Hardness	ASTM D2240-02	67 Shore A
Surface flammability	ASTM D2859	Pass

DIMENSIONS

Standard sizes	Full rolls	Custom lengths
91 cm x 91 cm		